



PPRTA QUARTERLY REPORT
El Paso County Department of Public Works

1st Quarter 2017
May 2017



Engineering Division
3275 Akers Drive
Colorado Springs, Colorado 80922
(719) 520-6460
www.elpasoco.com

PROJECTS AND PROGRAM UPDATE
TABLE OF CONTENTS

Fourth Quarter Executive Summary	3
2005-2014 Capital Programs PPRTA Budget Summary	4
2015-2024 Capital Programs PPRTA Budget Summary	4
 <u>Project Status Reports</u>	
 <i>2005-2014 Capital Projects</i>	
Marksheffel Road (South)	5-7
 <i>2015-2024 Capital Projects</i>	
Highway 105	8-9
Old Meridian Road / McLaughlin Road Roundabout	10
Monument Hill Road	11
New Meridian Road Extension / US Highway 24 Intersection	12
West Colorado Avenue	13-14
 <i>Maintenance Program</i>	
Maintenance Program	14

Executive Summary

The first quarter saw continued progress with the County's PPRTA capital projects. Planning for the 2017 maintenance program continued in anticipation of this work getting started during the second quarter.

The final two El Paso County projects for the 2005-2014 capital program are advancing with Marksheffel Road South expected to be substantially complete in the next quarter, and with the Meridian Road South project in design and being combined with the 2015 -2024 project for New Meridian/US Highway Intersection. Progress also continues on other the initial projects of the 2015-2024 capital program with Highway 105, Meridian Road/McLaughlin Road Roundabout, Monument Hill Road, which are in various stages of design.

Significant progress continues to be made on the **Marksheffel Road South** project with completion of the top lift of asphalt south of Fontaine, construction of the widened roadway between US 24 and PAFB East gate, and construction of the three water quality ponds for the project..

Preliminary design continues for the **Highway 105** corridor. Environmental clearance documents are also being finalized and coordinated with CDOT and FHWA related to the environmental clearance requirements for Project Segment A. Preliminary design for the rest of the corridor is also underway. The preliminary design will build on the Corridor Planning/Conceptual Design effort completed by El Paso County in 2012.

The design for the **Old Meridian Road/McLaughlin Road Roundabout** project is continuing by the El Paso County Engineering Division. This roundabout will improve the poorly aligned intersection in the Falcon Town Center, widen and upgrade Old Meridian Road to US-24, and provide additional drainage and pedestrian enhancements in the surrounding area.

The final design (90% level) plans and specifications were prepared and submitted by the design consultant on the **Monument Hill Road** project. Further utility coordination and environmental clearances were also advanced during this quarter.

Final design of the **New Meridian Road Extension/US Highway 24 Intersection** kicked off in the first quarter of 2017. Improvements include removing the traffic signal at Old Meridian Road/US-24 and converting access control at this location to a right-in/right-out; and completing New Meridian Road/US-24 as a signalized intersection with adequate turn lanes at all approaches. This project is being designed and will be constructed in conjunction with the federally funded Falcon Park & Ride project. The Meridian Road Extension project is an "A" list project from the 2004 capital project list.

Active construction has commenced on the **West Colorado Avenue** project with initial efforts focused on confirming utility locations, tree cutting, and milling of the roadway pavement in preparation for installation of storm sewer and water lines.

Planning continues for the **2017 maintenance program** contracts. Several contracts are anticipated to begin early in the 2nd quarter.

Capital Programs PPRTA Budget Summary

The following tables summarize the cumulative program budget for each project and identify the current status of the project.

2005-2014 Capital Projects

2015-2024 Capital Projects

Project Name	Cumulative Budget Thru 2014	Status
Baptist-Hodgen Connection	\$ 2,062,003	Completed
Akers Drive	\$ 1,714,614	Completed
South Metro Accessibility	\$ 25,017,190	
Phase I- Westmeadow Br.		Completed
Phase II- SH 115 to B St.		Completed
Phase III- PPCC to I-25		Completed
Phase IV- B St to PPCC		Completed
County Line Rd Upgrade I-25 to Furrow Rd	\$ 7,400,000	Completed
Meridian Rd Widening Woodmen Rd to Rex Rd	\$ 7,520,632	Completed
Hodgen Rd Upgrade SH-83 to Eastonville Rd	\$ 19,059,935	
Phase I – SH-83 to Black Forest Rd		Completed
Phase II – Bar X to Goshawk & at Meridian		Completed
Baptist Rd Widening I-25 to Tari Drive	\$ 8,568,100	Completed
Struthers Extension/Jackson Creek Falcon Nest to Baptist Rd	\$ 3,714,500	Completed
Marksheffel Rd Widening & Extension PAFB to Black Forest Rd	\$ 19,100,209	Completed
Baptist Rd Widening Mitchell Ave to I-25	\$ 544,729	Completed
Baptist Rd RR Xing Overpass at BNSF/UP / Monument Creek	\$ 10,861,241	Completed
Meridian Rd Extension Falcon Hwy to US-24	\$ 513,411	Design
Stapleton Drive (West)-Eastonville Rd to US-24	\$ 2,343,267	Completed
Marksheffel Rd Widening Mesa Ridge Parkway to US-24	\$ 32,231,078	Construction
Stapleton Drive (East)-US-24 to Curtis Rd	\$ 5,250,000	Completed

Project Name	Cumulative Budget Thru 2017	Status
Beacon Lite Rd	\$ 714,679	Not Yet Started
Black Forest Rd (<i>joint w/ City of Colorado Springs</i>)	\$ 0	City Led Project
Deer Creek, Base Camp, Microscope Way (<i>fka Emigrant</i>)	\$ 200,000	Not Yet Started
Eastonville Rd	\$ 8,525,000	Not Yet Started
Fontaine Blvd/Security Blvd/Widefield Blvd Intersection	\$ 1,125,000	Not Yet Started
Highway 105	\$ 5,799,901	Design
Main St/Security Blvd	\$ 750,000	Not Yet Started
Old Meridian/McLaughlin Roundabout	\$ 2,376,000	Design
Mesa Ridge Parkway	\$ 750,000	Not Yet Started
Monument Hill Rd	\$ 3,965,000	Design
New Meridian/US Hwy. 24 Int.	\$ 4,608,000	Design
South Academy Blvd	\$ 1,851,407	Not Yet Started
Stapleton Drive/Briargate Blvd Corridor Study (<i>joint w/ City of Colorado Springs</i>)	\$ 314,000	Not Yet Started
Tutt Blvd Extension (<i>joint w/ City of Colorado Springs</i>)	\$ 555,000	City Led Project
West Colorado Ave (<i>joint w/ City of Manitou Springs/City of Colorado Springs</i>)	EPC \$7,074,321 COS \$11,067,000 TOT \$18,141,321	EPC Led Project Construction

Project Status Reports: 2005-2014 Capital Projects

Marksheffel Road (South)

Project Description: This project will access, document, design and construct the transportation and safety improvements for the 11 mile corridor that extends from US-24 to the future connection with Mesa Ridge Parkway and also includes the short stretch of roadway beyond this future connection to the existing terminus at C&S and Link Road on the south.

The proposed improvements are broken into four zones:

- Zone 1 – US-24 to Peterson Air Force Base (PAFB) east gate – this section will be reconstructed to 4 lanes with auxiliary lanes and signal modifications at the intersections.
- Zone 2 – PAFB east gate to Drennan – this section will be reconstructed as a 2 lane section with shoulders. Portions of this section will follow the existing roadway, and portions will follow a new alignment that will eliminate the sharp horizontal curves, and improve the vertical profile, resulting in an increase in the overall safety along this stretch. The north leg of the Drennan Road intersection will be reconfigured accordingly.
- Zone 3 – This zone picks up at the end of the existing 4 lane section south of Bradley and extends to the future Mesa Ridge Parkway connection. This section will be constructed as a 2 lane section with the continuous center turn lane and shoulders.
- Zone 4 – Extends from the future Mesa Ridge Parkway connection to Link Rd/C&S intersection – This section will remain a 2 lane section but will be reconstructed to add shoulders and to reconfigure the severe horizontal curve just east of the Link Rd/C&S intersection. This zone is being constructed in conjunction with the capital project but is being funded with PPRTA maintenance funds.

Project Team:

- Designer: Parsons Brinkerhoff
- Construction Manager: AECOM
- Contractor: Wildcat Construction Company, Inc.

Cost Summary:

- PPRTA budget - \$32,231,078
- Contracts authorized - \$ 31,839,118

Schedule Summary:

- Complete Property Acquisition – 2016
- Construction 2016 / 2017 (18 month duration)
- Utility Relocation 2015 / 2016 / 2017

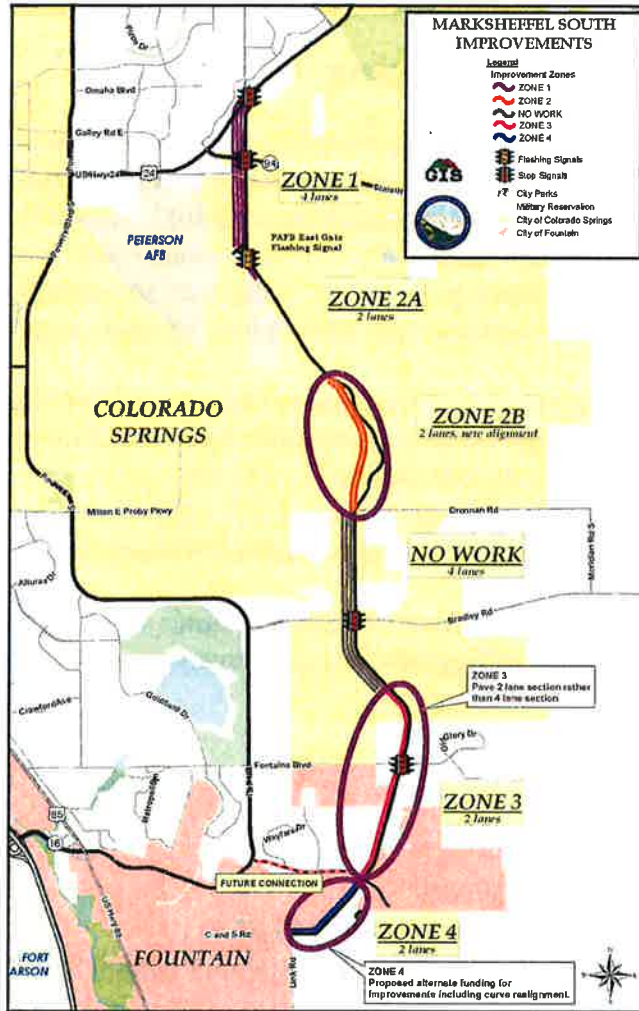
Progress/Status:

- CSU Electric and Century Link completed their utility relocation in Zones 1 &2 between Space Village and the PAFB East gate.
- With the utilities out of the way, Wildcat construction was able to complete the widening of the roadway and installation of drainage facilities in this stretch.

- Roadway widening and vertical alignment changes were also completed between US 24 and SH 94 under a full road closure with traffic detoured to SH 94. The roadway construction in this portion was completed ahead of schedule.
- Installation of the new signal poles at SH 94 were completed.
- Reconstruction of the intersection at SH 94 began with closure of the west half of the intersection and the SH 94 between US 24 and Marksheffel and detours in place. Traffic will then be shifted to the west side of the intersection to allow reconstruction of the east half.
- Work proceeded on the three water quality ponds being constructed as part of the project.
- Top Mat paving and final striping of the widened roadway south of Fontaine was completed during this period as well.
- Weekly utility coordination meetings are held with representatives of the utility companies to identify conflicts and schedule relocation activities in conjunction with the planned construction.
- Project coordination with the key governmental entities along this corridor continues. Key governmental stakeholders include El Paso County, City of Colorado Springs, City of Fountain, CDOT, Pikes Peak Area Council of Governments, and Peterson Air Force Base.



Marksheffel Road South Paving



Project Status Reports: 2015-2024 Capital Projects

Highway 105

Project Description: The Highway 105 project will evaluate, design and construct capacity and safety improvements between the I-25 off ramps and SH 83. The corridor is approximately five miles in length and improvements will be phased as required. A corridor study outlining the proposed conceptual improvements, funded by El Paso County was completed in 2012. This corridor study will serve as the starting point for design of the corridor improvements. For conceptual planning purposes, the corridor was broken into 5 project segments:

- Project A – I-25 off Ramp to Lake Woodmoor Drive (Sta 103+00 to 151+50)
- Project B – Lake Woodmoor Drive to Martindale (Sta 151+50 to 198+00)
- Project C – Forest Drive Loop (Sta 206+00 to 241+50)
- Project D – Rollercoaster Road (Sta 273+00 to 297+50)
- Project E – All Remaining segments not included in Projects A, B, C, & D

Project Segment A has also been approved for federal funds and is anticipated to be the first segment constructed. Final design of Segment A is underway.

Project Team:

- Designer: HDR

Cost Summary:

- PPRTA Total Budget – \$19,559,805
- Preliminary Design Contract Authorized – \$691,825
- Federal Funds for Project A – \$5,565,943 (\$4,608,045 federal / \$957,898 local match)

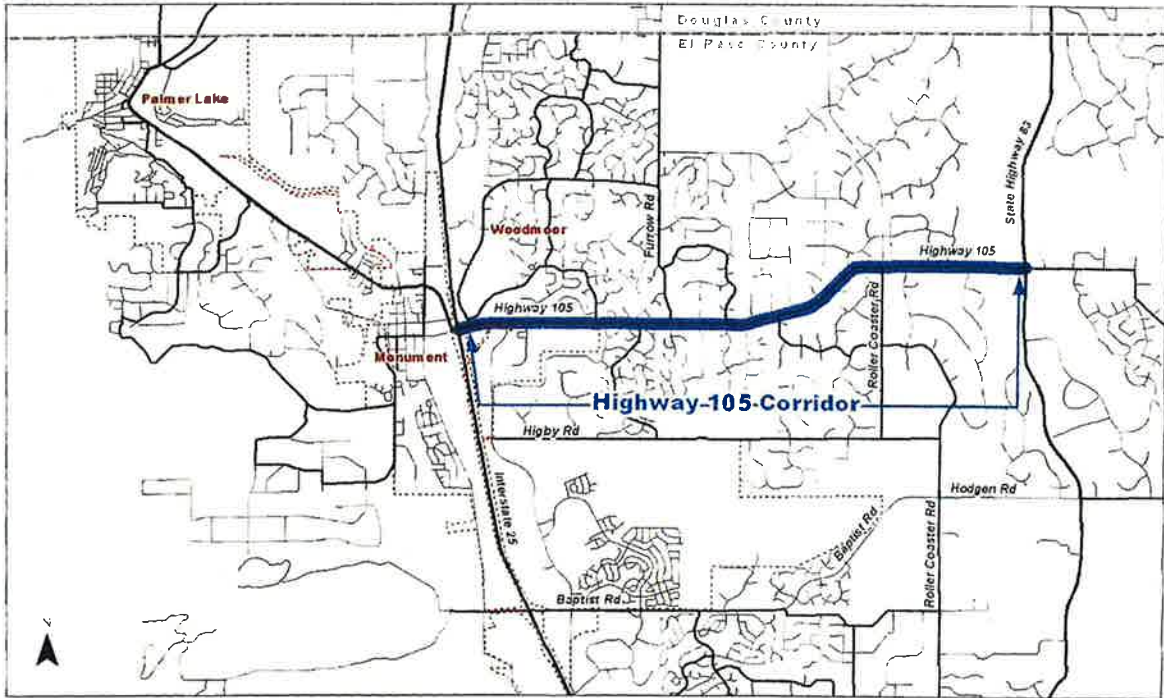
Schedule Summary:

- Conceptual design completed – 2012 (funded by El Paso County Road & Bridge)
- Preliminary design – 2015/2016
- Project A - Final design 2016/2017
- Project A – Construction 2017/2018
- Project Segments B-E – Final design & Construction TBD

Project Status:

- Preliminary design for the entire corridor is progressing with a separate FIR meeting which is anticipated in the second quarter of 2017.
- Final Design for Project A is in progress.
- Environmental documents required for the FHWA required environmental clearance for Project A are being finalized and approval is anticipated in the second quarter of 2017.
- Lane requirements and intersection configurations for the Project A segment are being finalized.
- Right of Way plans and Property acquisition discussions began in the 1st quarter of 2017.
- Information on the corridor Plan / Conceptual Design is available at www.105corridor.com

Figure 1.1: Study Area Vicinity Map



Old Meridian Road / McLaughlin Road Roundabout

Project Description: This project involves reconstructing the McLaughlin Road / Old Meridian Road intersection as a modern single-lane roundabout and upgrading the Old Meridian Road cross-section toward US-24. The current intersection consists of three approaches with poor alignment resulting in driver confusion and traffic conflicts. The project is a safety improvement that will include pedestrian facilities at the intersection and along Old Meridian Road to the southeast and McLaughlin Road to the northeast. The project will also necessitate drainage improvements to accommodate runoff from the contributing areas, involving a new storm drain system in Old Meridian Road to US-24.

Project Team:

- Designer: El Paso County Engineering Division

Cost Summary:

- PPRTA budget: \$ 2,376,000

Schedule Summary:

- Final Design: 2017
- Property Acquisition: 2017
- Utility Relocation: 2017 / 2018
- Construction: Anticipated 2018

Progress/Status:

- Final design in progress



Vicinity Map



Northwest view at McLaughlin/Old Meridian



Aerial Map

Monument Hill Road

Project Description: Monument Hill Road is a 2.4 mile, 2-lane asphalt road operating as a rural local road in northern El Paso County, Colorado with Douglas County to the north and the Town of Monument to the south. It extends from County Line Road to Woodmoor Drive providing access to local residents, and significant traffic uses this route as a frontage road for Interstate 25 and collector access to Monument. The road has many safety issues and a high accident record, including two fatalities in recent history.

This project consists of design of safety enhancements along Monument Hill Road. Anticipated enhancements include improvements to sight distance, horizontal and vertical alignments, drainage, and water quality, as well as the addition of shoulders and intersection and multimodal improvements.

Project Team:

- Design Consultant: AECOM

Cost Summary:

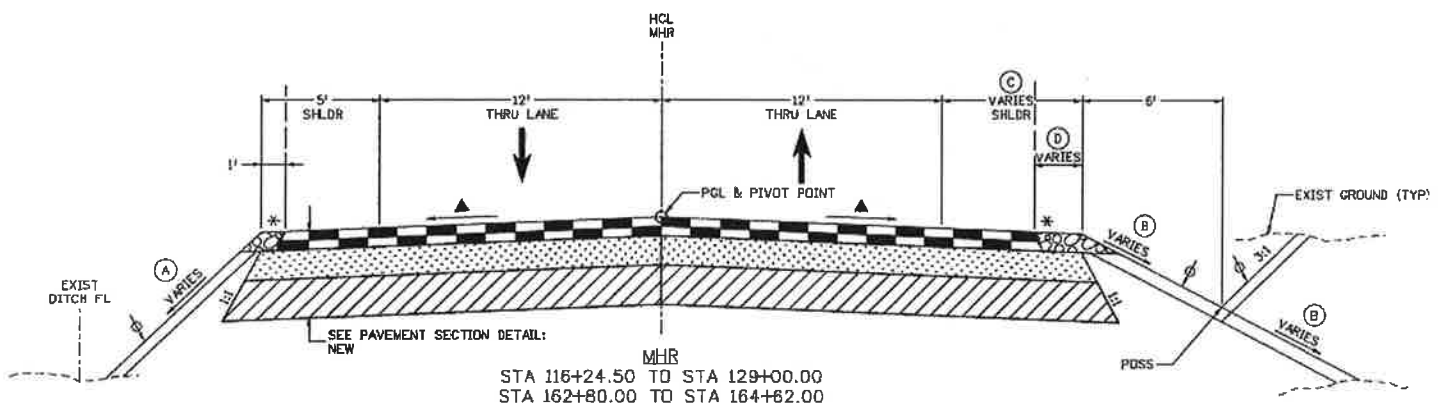
- Total PPRTA budget - \$ 3,965,000
- Contracts authorized - \$ 857,820

Schedule Summary:

- Design: 2015 - 2017
- Construction: Anticipated Summer 2018

Progress/Status:

- Final Plans, Specs, Cost Estimate and Right-of-Way Plans submitted in March 2017
 - Submittal review meeting set for April 2017
 - Furthered utility contacts and field line locates
 - Furthered coordination with property acquisition firm
 - Furthered coordination with CDOT and Port of Entry



Example of typical roadway cross section

New Meridian Road Extension/US Highway 24 Intersection

Project Description: Intersection improvements at Old Meridian/US-24, New Meridian/US-24 (2014 PPRTA “A” list project); New Meridian Extension from US-24 to Falcon Highway (2004 PPRTA “A” list project), and the Falcon Park & Ride (federal funds project). These projects will be designed and constructed concurrently for cost and time efficiencies. Inadequate auxiliary lanes on Old Meridian Road currently cause delays; skewed intersection limits driver sight distance, increases pedestrian exposure and reduces capacity at US-24. Improvements include removing the traffic signal at Old Meridian/US-24 and converting access control at this location to a right-in/right-out; and completing New Meridian/US-24 as a signalized intersection with adequate turn lanes at all approaches. Improvements will maximize intersection operational efficiency, increase motorist and pedestrian safety and provide appropriate auxiliary lanes and drainage improvements.

Project Team:

- Designer: HDR
- CM/Contractor: TBD

Cost Summary (not including Park & Ride):

- PPRTA budget: \$ 4,608,000 Intersection
\$ 513,411 Meridian Rd. ext.

Schedule Summary:

- Design: Final Design commenced in Jan. 2017
- Construction: Anticipated 2018

Progress/Status:

- Preliminary design complete.
- Final design commenced in first quarter 2017.
- Coordination continues with CDOT, City of Colorado Springs, Mountain Metro Transit and other stakeholders.



Existing Meridian Road approaching US-24

West Colorado Avenue

Project Description: This project is a joint effort with City of Manitou Springs, and the City of Colorado Springs. The Corridor Study phase developed recommendations for short term transportation and safety improvements and a long range livable, walkable, economic vision for the 1.5 miles of West Colorado and Manitou Avenues between North 31st Street and the US-24 interchange. The planning phase of the project (funded by CDOT) concluded with a Public Open House on March 20, 2013 in which the preferred three lane option, as recommended by citizens and stakeholders, was presented to the public. The three lane option involves one traffic lane in each direction eastbound and westbound and a center left-turn lane. A dedicated left turn lane would reduce accidents, primarily caused by cars stopping to make left turns on the current cross-section. The preliminary design phase (funded by CDOT) was completed in late 2014 and resulted in 30 percent design plans for the corridor.

The major project elements include roadway improvements, a new bridge and wall structures associated with the relocation of portions of Fountain Creek and the Midland trail, signals, drainage and utility improvements including new water and sanitary facilities, street lighting, and undergrounding of most of the overhead electric and communication lines, sidewalks, and streetscape/landscaping elements,.

Project Team:

- Design Consultant: FHU
- Construction Manager: CH2M
- Contractor: Wildcat Construction

Cost Summary:

- Total project budget - \$30,930,475 (CDOT RPP budget - \$800,000, PPRTA budget - \$24,078,000, RAMP budget - \$2,602,475, Other - \$3,450,000)

Schedule Summary:

- Corridor Study - Complete (2013)
- Preliminary Design (30%) - Complete (2014)
- Final Design - in progress (90% Complete for most elements)
- Selection of construction manager & contractor – (4th quarter 2016)
- Property Acquisition -2016/2017
- Construction 2017/2018

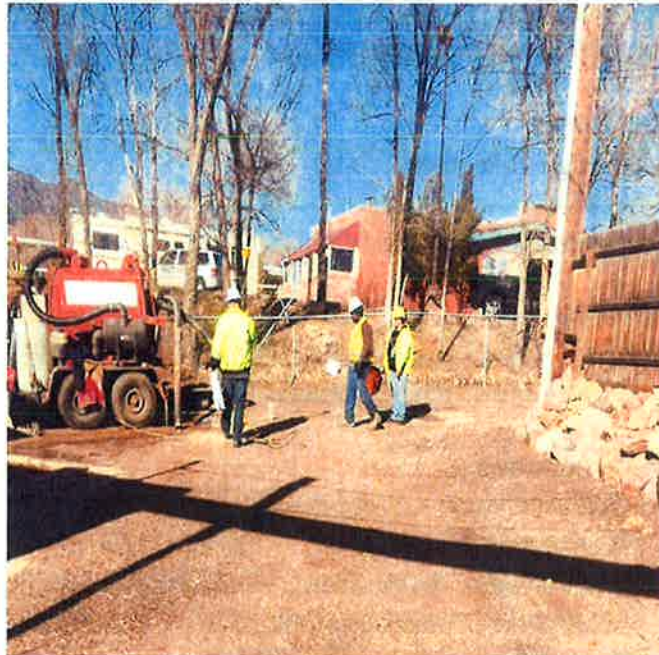
Progress/Status:

- Project website: www.westsideavenueplan.com
- Construction activities commenced in the first quarter focusing on confirming utility locations throughout the corridor by having the contractor do extensive potholing. This effort will help finalize the utility relocation design efforts. Coordination with CSU and Manitou Springs regarding the utility relocation and new installations continues.
- The contractor also began tree cutting operations along Fountain Creek and the Midland Trail adjacent to the Garden of the Gods RV Park, and in the vicinity of Ridge Road in anticipation of the upcoming construction efforts in those areas.

- Milling of the center lanes in preparation for storm sewer and water line installation was also performed, resulting in closure of the two center lanes. The utility installations are impacting traffic through the construction zone and flaggers are present to direct traffic around the active construction and to assist with access to/from the businesses in the vicinity of the construction.
- Storm sewer installation in the roadway commenced in the vicinity of Emerald fields and is proceeding westward.
- Property acquisition activities are continuing including identification of needs, discussions with impacted property owners, development of legal descriptions and appraisals.
- The project team continues to coordinate and provide project updates via the website, weekly traffic advisories and weekly lane closure reports.



Milling Operations



Utility Potholing

Program Status Reports: 2017 Maintenance Programs

Planning continues for the **2017 maintenance program** contracts. The planning includes prioritization of projects within each contract so the work can proceed without delay. Several contracts are anticipated to begin early in the 2nd quarter.