
PPRTA QUARTERLY REPORT
El Paso County Public Services Department

3rd Quarter
November 2012



Engineering Division
3275 Akers Drive
Colorado Springs, Colorado 80922
(719) 520-6460
www.elpasoco.com

PROJECTS AND PROGRAM UPDATE
TABLE OF CONTENTS

Third Quarter Executive Summary	3
Capital Programs PPRTA Budget Summary	4

Project Status Reports

Capital Projects

Hodgen Road Corridor Improvements	5-6
Baptist Road (West)	7
County Line Road	8
Meridian Road (North)	9-10
Marksheffel Road (South)	11-12
Stapleton Road (East)	13

Maintenance Program

Concrete Surface Drainage Program	14
Gravel Road Projects	14
Asphalt Overlay Projects	15

Executive Summary

The third quarter saw continued progress with the County's PPRTA capital projects, as well as significant progress on the 2012 maintenance program.

A contract extension with URS Corporation for property acquisition for second phase of the **Hodgen Road** project was approved in August. An open house was held in September concerning the second phase of the project which includes safety improvements from Bar X Rd through Goshawk Rd East and at the intersection with Meridian Rd.

Various alternative alignments for the proposed grade separated crossing for the **Baptist Road (West)** project were evaluated based upon feedback received during the open house and as a result of various meetings held with adjacent property owners. A public meeting to present the preferred alternative is being scheduled for the fourth quarter of 2012.

Efforts continue to finalize design, property acquisition needs and utility relocation requirements on the **County Line Road** project. Coordination with Douglas County continues. The construction contract will be advertised for bid in late 2012 or early 2013.

Final design of the for the phase two improvements for the **Meridian Road (North)** project was completed during the third quarter and construction commenced in September. This project will be completed in Spring 2013.

Initial data gathering and intergovernmental coordination for the **Marksheffel-South** project are underway. Plans are being developed for the initial public open house in October 2012.

El Paso County Engineering Division completed the design survey and commenced preliminary design for the **Stapleton Road (East)** project from SH24 east to tie into the intersection of Curtis Road/Judge Orr Road.

Significant work was completed in the third quarter with respect to the **2012 maintenance program**. Completed work includes 3.5 miles of Asphalt overlay and 6 miles graveling. Concrete Program work consisted of 5,596 linear feet of curb and gutter, 5,357 linear feet of sidewalk, 11 cross pans and 19 pedestrian ramps being constructed. Finally, a contract was awarded in September to complete traffic signal equipment upgrades and rehabilitation at various locations in El Paso County and construction commenced at the Constitution Avenue/Peterson Road intersection on September 22, 2012.

Capital Programs PPRTA Budget Summary

The following table summarizes the 2012 program budget for each project and identifies the current status of the project.

PPRTA- Group A- Capital Project Ten year Summary – 2012 Budget							
Project Name	Original Project Budget	2012 Revised Project Budget	Cumulative Budget Thru 2012	Budgeted -2013	Budgeted 2014	Total Budgeted	Status
Baptist-Hodgen Connection	1,070,000	2,062,003	2,062,003			2,062,003	Completed
Akers Drive	2,300,000	1,714,614	1,714,614			1,714,614	Completed
South Metro Accessibility	20,000,000	25,029,921	25,029,921			25,029,921	
Phase I- Westmeadow Br.							Completed
Phase II- SH 115 to B St.							Completed
Phase III- PPCC to I-25							Completed
Phase IV- B St to PPCC							Completed
County Line Road Upgrade I-25 to Furrow Road	2,150,000	5,223,849	5,223,849			5,223,849	Design
Meridian Road Widening Woodmen Rd to Rex Rd	5,500,000	7,613,409	7,613,409			7,613,409	Phase 1-Completed Phase 2-Construction
Hodgen Road Upgrade SH 83 to Eastonville ***	12,000,000	16,665,180	16,665,180			16,665,180	Phase 1-Completed Phase 2-Design
Baptist Road Widening I-25 to Tari Dr	6,200,000	8,568,100	8,568,100			8,568,100	Completed
Struthers Extension/Jackson Creek Falcon Nest to Baptist Road	2,200,000	3,714,500	3,714,500			3,714,500	Completed
Marksheffel Road Widening & Extension PAFB to Black Forest Road	13,500,000	19,298,835	19,298,835			19,298,835	Completed
Baptist Road Widening Mitchell Ave to I-25	750,000	1,044,729	1,044,729			1,044,729	Design
Baptist Rd RR Xing Overpass at BNSF/ UP / Monument Creek	2,600,000	3,621,727	3,621,727			3,621,727	Design
Meridian Road Extension Falcon Hwy to US 24	375,000	513,411	513,411			513,411	Design
Stapleton Drive (West)- Eastonville Rd to US 24	1,250,000	2,371,215	2,371,215			2,371,215	Completed
Marksheffel Road Widening Mesa Ridge Pky to Hwy 24	22,800,000	31,759,762	3,810,573	14,727,344	13,221,845	31,759,762	Design
Stapleton Drive (East)- US 24 to Curtis Road	1,250,000	1,741,215	1,741,215			1,741,215	Design

Project Status Reports
Capital Projects

Hodgen Road Corridor Improvements

Project Description: The second phase of this project consists of safety improvements on Hodgen Road from Bar X Road through Goshawk Road East and the Hodgen Road / Meridian Road intersection. The first phase of this project (completed December 2011) consisted of safety improvements from SH 83 to Black Forest Road.

Project Team:

Designer: URS Corporation

Construction Management: Wilson and Company

Construction: R.E. Monks Construction Company

Cost Summary:

- PPRTA budget - \$16,665,180

Phase 2 (in progress)

- Total estimated project cost - \$ 5.0 M
- Design/Property Acquisition Contract authorized - \$ 913,978

Phase 1 (completed)

- Phase 1 project cost - \$11.6 M

Progress/Status:

- In August, the contract extension with URS Corporation for property acquisition was approved
- An open house was held on September 11, 2012
- Property Acquisition expected to begin in October 2012
- Final design expected to be complete in December 2012
- Utility Relocation expected to begin Spring 2013

This phase of the project will provide improved safety by providing adequate horizontal and vertical sight distance, shoulders, appropriate auxiliary lanes at intersections and overall drainage improvements.

Baptist Road (West)

Project Description: This project consists of two of the A-list projects: Baptist Rd widening from Interstate 25 to Forest Lakes Drive and the Baptist Road railroad crossing at the BNSF railroad. This project will identify and evaluate options for a grade separated crossing of this single road access into the Twin Valley Sub-Area west of the railroad. In addition, this project will evaluate the roadway improvements needed between Old Denver Highway and the I-25 ramps.

Project Team:

Designer: Felsburg, Holt & Ullevig (FHU)

Cost and Schedule Summary:

PPRTA budget - \$4,666,456

Contracts authorized - \$180,681

Amounts Invoiced - \$168,533

Progress/Status:

- Refinement of the preferred alternative and development of recommended initial phase improvements including a grade separated crossing are underway.
- Scope being developed for advancing project into preliminary design. A contract amendment is anticipated for the 4th quarter.
- Initiated preliminary investigation into an Energy and Mineral Impact Assistance Grant from the Department of Local Affairs.
- A public meeting will be scheduled for the fourth quarter of 2012.



Baptist Road – Existing at-grade RR crossing

County Line Road

Project Description: This project will institute safety improvements along the corridor between I-25 and Furrow Road to include adding shoulders, revisions to the vertical profile and horizontal alignments, drainage improvements, providing turn lanes at key intersections and major reconstruction and widening of the intersection at Furrow Road

Project Team:

Designer: Stantec Consulting

Cost Summary:

- PPRTA budget - \$5,223,849
- Contracts authorized - \$806,636.37
- Amounts invoiced - \$656,105.31
- Property Acquisition- 2012/2013
- Utility Relocation- 2013
- Construction- 2013

Progress/Status:

- Planned project improvements will include adding shoulders, reconfiguring the horizontal and vertical profiles in the area just west of Furrow Road and realigning the intersection at Furrow Road including providing turn lanes to accommodate the future traffic needs. Improvements in the vicinity of Furrow Road related to shifting the intersection and revising the horizontal and vertical alignments and providing the needed turn lanes will require obtaining additional right of way and easements from several adjacent property owners both within El Paso County and Douglas County. Some of the property impacts to accomplish these improvements are significant.
- Acquisition of right of way and easements from the Conservation Easements in Douglas County on the north side of County Line Road will also be required for the shoulder widening improvements.
- The 90% design plans were completed and distributed for review. Construction documents and ROW plans will be finalized based on review comments and continued discussions with impacted utilities.
- Project phasing for construction improvements being refined.
- Coordination with Douglas County representatives and impacted property owners continues.
- The project will be advertised for construction in late 2012/early 2013.

Meridian Road (North)

Project Description: Construction of phase one from Woodmen to Stapleton is complete. This phase included new turn lanes at the Woodmen Road intersection and widening to four lanes to Stapleton Drive. Phase two of the project will continue the four lane road section north through Indian Paint trail and transition to the existing two-lane road south of Rex Road. A 10' x 8' concrete box culvert will be constructed just north of Londonderry Road to accommodate drainage and a future trail providing equestrian crossing. Auxiliary lanes will also be constructed at the Londonderry and Stapleton intersections. The phase two project is approximately 1.25 miles.

Project Team:

Designer: URS Corporation

Construction Contractor: Rocky Mountain Materials and Asphalt, Inc.

Construction Management: El Paso County Engineering Division

Cost and Schedule Summary:

- PPRTA budget - \$7,613,409

Phase 2 (under construction):

- Preliminary Design Contract authorized - \$256,408
- Final Design Contract authorized - \$287,335
- Construction Contract amendment authorized - \$2,785,672

Phase 1 (completed)

- Phase 1 project cost - \$4.3 M

Schedule:

- Phase 1 Completed
- Phase 2 Construction began September 2012
- Phase 2 Construction completion targeted for Spring 2013

Progress/Status:

- URS has completed final design for Phase 2.
- A contract amendment was authorized with the contractor, Rocky Mountain Materials and Asphalt, Inc., in the third quarter of 2012.
- Utility relocation and construction began in September 2012.
- Property acquisition is underway and expected to be complete in the fourth quarter of 2012.



Meridian Road (North) Phase 2: Earthwork of new Northbound lanes



Marksheffel Road (South)

Project Description: The initial phase of this project will involve a comprehensive and collaborative planning study to assess and document the transportation and safety needs of the corridor. The corridor extends from SH 24 to the future connection with Mesa Ridge Parkway on the south end of the road, and will also look at the short stretch of roadway between this future connection and existing terminus at C&S Road on the south. The study will also identify the environmental linkages/concerns that will impact the selection of a preferred alternative and the implementation of the recommended improvements. The study is also expected to identify near term safety improvements consistent with the long term needs that can be developed and implemented in the next few years as separate safety improvement projects.

Project Team:

Designer: Parsons Brinkerhoff

Cost and Schedule Summary:

PPRTA budget - \$31,759,762

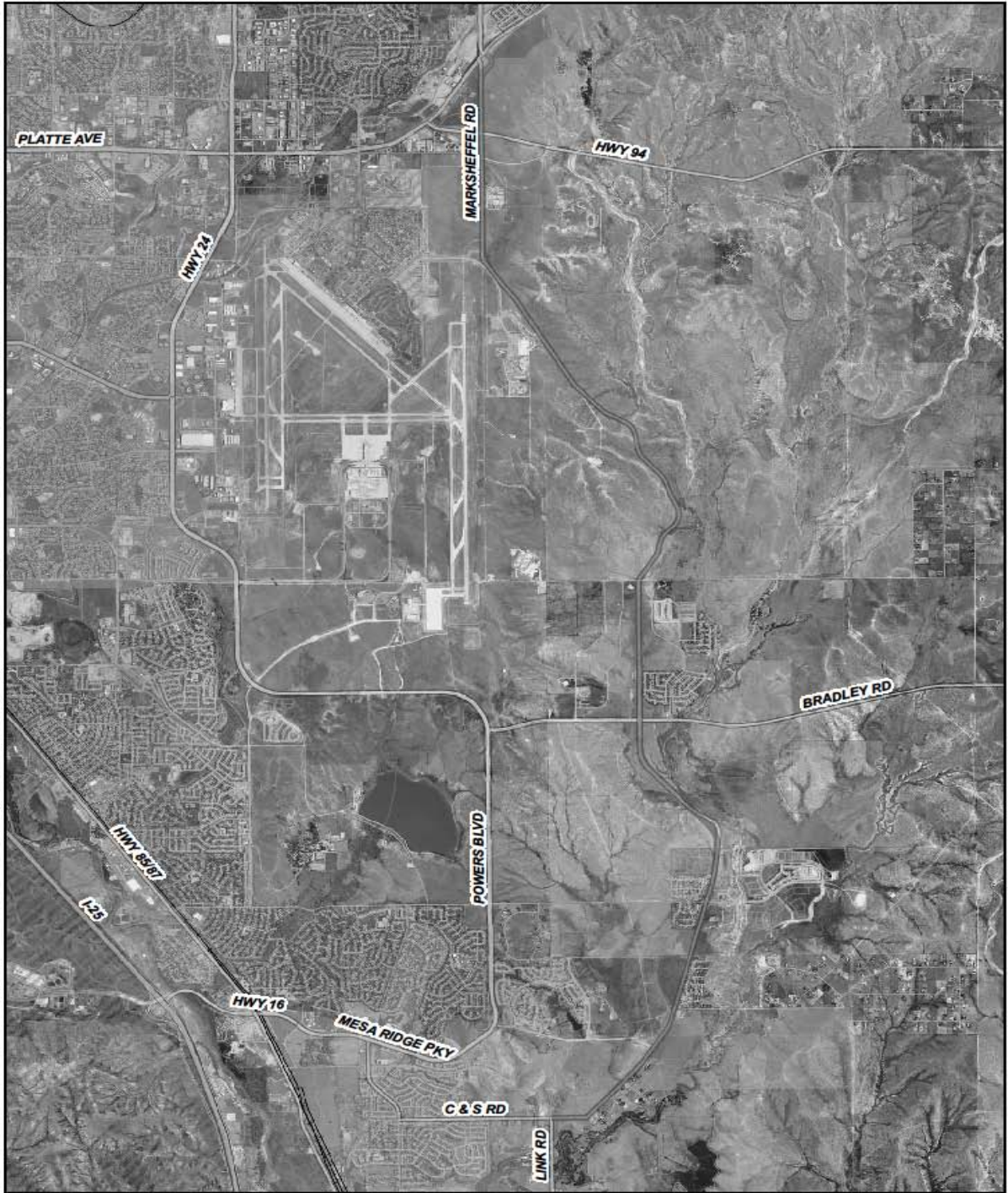
Contracts authorized - \$ 749,777

Amounts invoiced - \$30,648

Schedule – completion of corridor study –second quarter 2013

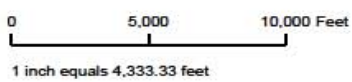
Progress/Status

- Initial data gathering and mapping activities underway
- Development of traffic modeling scenarios to assess potential changes in land use, as well as, assessment of accident data has commenced.
- Project coordination with the key governmental entities along this corridor has been initiated and will continue throughout the project. Key governmental stakeholders include El Paso County, City of Colorado Springs, City of Fountain, CDOT, and Peterson Air Force Base.
- A public open house to introduce the project and obtain citizen input is planned for October 2, 2012.



Marksheffel Road Corridor

04/17/2012



Legend

- | | | |
|----------------------|-------------|----------------------|
| Marksheffel Corridor | Runways | Park Property |
| Major Roads | Lake | Pike National Forest |
| Other Roads | Stream Area | Military Reservation |
| Private | Streams | Incorporated |
| Railroad | | |



Stapleton Road (East)

Project Description: Stapleton Road west of SH24 was completed in 2011. This project will extend Stapleton Road from SH24 to Curtis Road at Judge Orr Road.

Project Team:

Designer: El Paso County Engineering Division

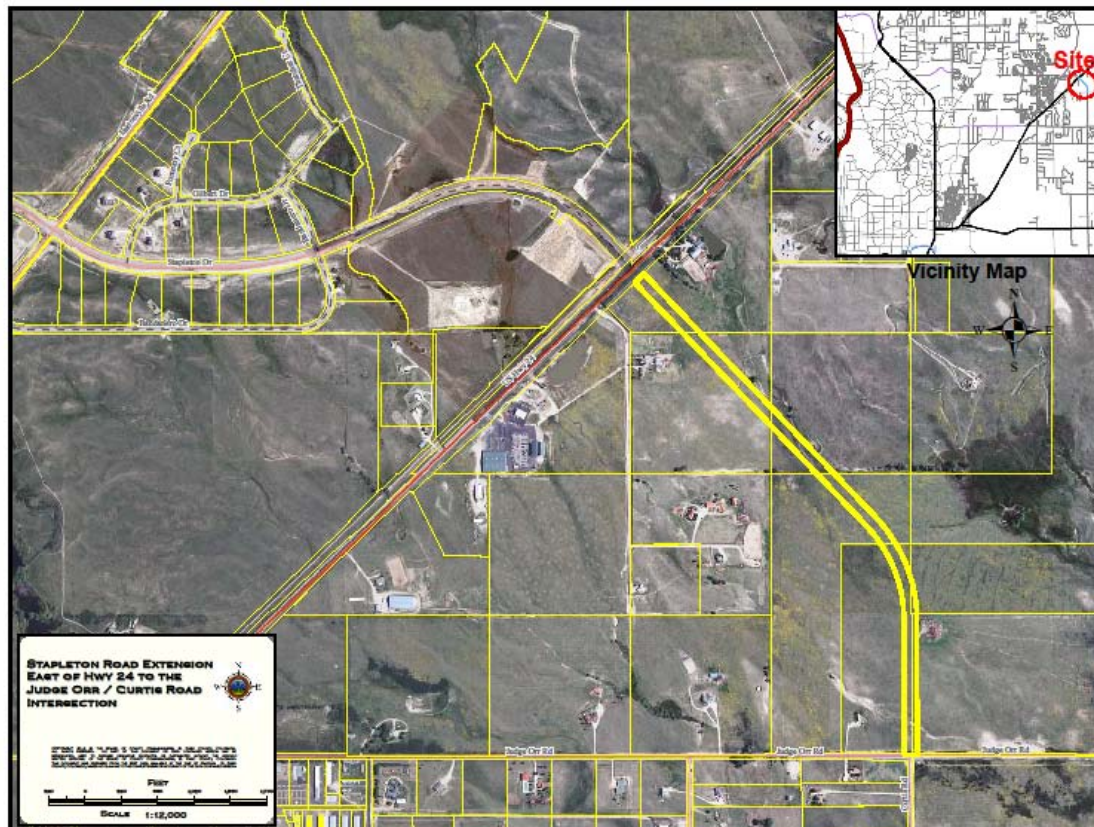
Cost and Schedule Summary:

PPRTA budget - \$ 1,741,215

Contracts authorized - \$ 0

Progress/Status

- Design survey has been completed.
- Preliminary design has commenced and is expected to be complete in Spring 2013
- Contract for Traffic Impact Study expected to be awarded in Fall 2012 / Winter 2013



Stapleton Road East – Conceptual Alignment

Maintenance Projects

Concrete Surface Drainage completed in 3rd Quarter

Location

323 Catalina Drive	538 Catalina Drive
1712 Keswick Drive	1415 Chadwick Drive
4271 College View	4342 Millburn South
2015 Nielsen Court	2017 Chamberlain South
Chantilly Place & Manassas Street	Lone Tree Court & Battle Mountain
2115 Poteae Circle	1535 Yakima Drive
1870 Pima Drive	2010 Pima Drive
2035 Pima Drive	1865 Okeechobee Drive
1130-1150 Chiricahua Loop	Mission Road & Western Drive
6811 Mission Road	SW Corner Peterson Road & Palmer Park Blvd.
Irish Drive & Bucolo Avenue	7173 Palmer Park Blvd.
1750 Piros Drive	73 Security Blvd.
Fontaine Blvd & RR Tracks	10767 Greenbelt Drive
11975 Blackhills Drive	B Street & Pedestrian Bridge
7045 White Mountain Drive	Bear Creek Nature Center Driveway
1290 Atoka Drive	Peterson Road & Cul-de-sac
Mineola Street- Palmer Park Blvd. North to endpoint	
President Avenue- Kipling to Caballero	
Cleveland Court- President to endpoint	
Fielding Terrace- Defoe to Ketchum	
Terminal Avenue- Ford to endpoint	
Brook Forest Drive- Grand Valley to Grand Valley	
Painted Rock Drive- Woodstock to Woody Creek	

We were able to complete 5,596 Linear Feet of Curb and Gutter, 5,357 Linear Feet of Sidewalk, 11 cross pans and 19 pedestrian ramps in the third quarter.

Roads Graveled in 3rd Quarter

Location

Limits of Construction

Old Stage Road	End of Pavement west for 3 miles
Book Road	Peyton Highway to Enoch Road

Asphalt Overlay completed in 3rd Quarter

Location	Limits of Construction
Amelia Street	Highway 24 to Terminal Ave
Higby Road	Jackson Creek Pkwy to Bowstring Rd
Main Street	Bradley Road to Highway 85
Paonia Street	Terminal Ave to Galley Rd
Roller Coaster Road	Royal Troon Dr to County Line Road
Ruby Drive	Park Vista Blvd to Austin Bluffs Pkwy
Sapphire Drive	Ruby Dr to Garnet Dr
Burgess Road	Milam Rd to Burrows Rd
Copperfield Drive	Jessie Dr to Jessie Dr (All)
Grama Ridge	Pond View Pl to Walker Rd
Grand Valley Drive	Medicine Bow to Sugar Creek Dr
Hancock Expressway	City Limits to Bradley Rd
Harvard Street	Widefield Blvd to South End (Includes all cul-de-sacs)
Southmoor Drive	Fountain City Limits to Highway
85 Harvard Place	Harvard St to End Point
Wageman Drive	Pathfinder Dr to Bradley Rd
Woodmen Hills Drive	Tomkins Rd to Del Rio Rd
Academy Ramps	Bradley Rd to Academy Blvd
Soaring Wing Road	Wing Tip Rd to County Line Rd
Wing Tip Road	Soaring Wing Dr to Soaring Wing Dr (All)
Radbourne Court	Scottswood Dr to Endpoint
Meridian Road	“S” Curves



Paving operation on Harvard Street cul-de-sac